



HIGH SCHOOL ADDITION DESIGN DEVELOPMENT

BOARD PRESENTATION - March 26, 2018



PERKINS+WILL



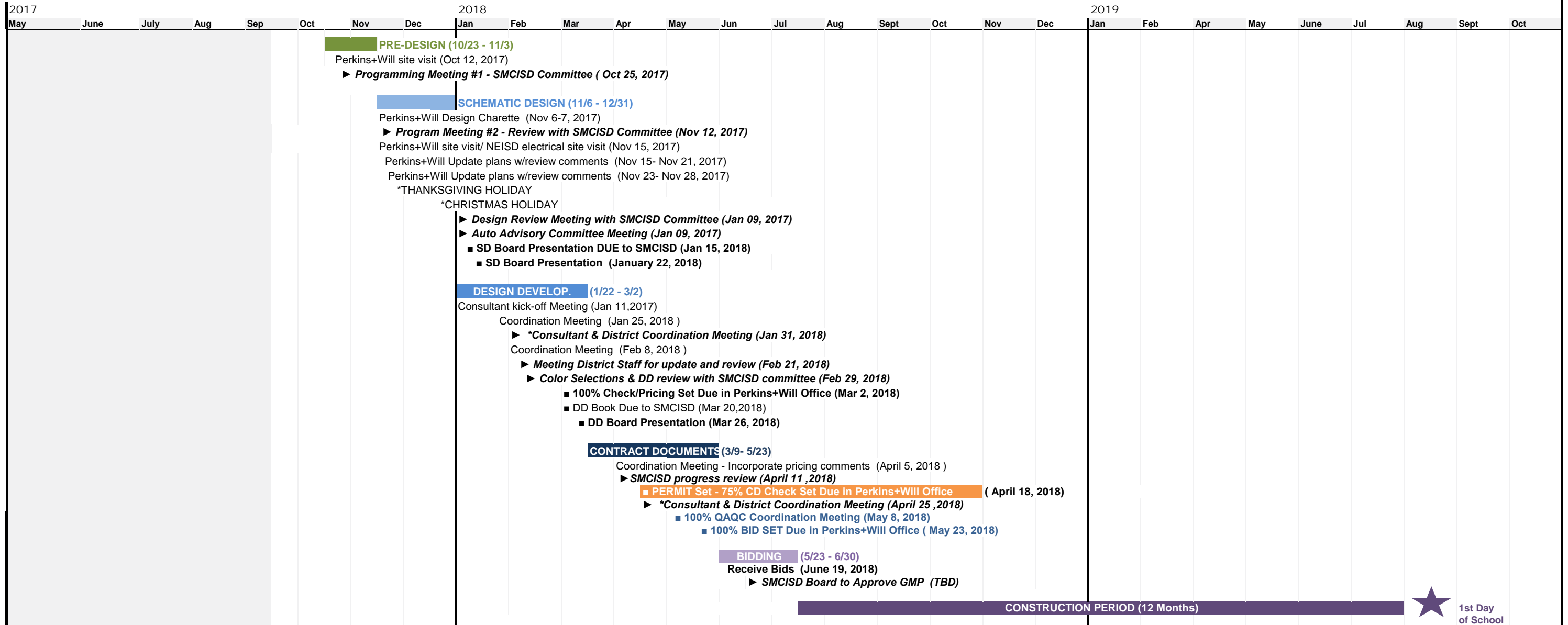
PROJECT TEAM /

San Marcos CISD Stakeholders

SCHOOL BOARD	DISTRICT ADMINISTRATION	STAKEHOLDERS	ARCHITECTURAL TEAM	CONSULTANTS
Clementine Cantu District 5 Trustee, President	Michael Cardona Superintendent	Dr. Bobbie Turnbo Principal	Perkins + Will Timothy Sisak Vet Med/Animal Industries Faculty	CIVIL ENGINEER Gil Engineering Victor Gil Project Engineer
John McGlothlin At-Large Trustee, Vice President	Karen Griffith Assistant Superintendent of Business and Support	CJ Odam Assistant Principal	Jennifer Wiggins Vet Med/Animal Industries Faculty	MEP ENGINEER Estes McClure & Associates Wesley Van Rite Project Engineer
Anne Halsey At-Large Trustee	Monica Ruiz-Mills Assistant Superintendent of Teaching, Learning and Assessments	Bianca Edwards Law Enforcement Faculty	Brandon Fizer Vet Med/Animal Industries Faculty	STRUCTURAL ENGINEER DATUM Engineers, Inc. Jeremy Klahorst Project Engineer
Miguel Arredondo District 1 Trustee, Secretary	James Barton Executive Director of Secondary Education	Javier Castro Law Enforcement Faculty	Bradley Gaskill Robotics/STEM Faculty	TECHNOLOGY True North Consulting Group Jason Anderson Project Engineer
Lupe Costilla District 3 Trustee	Cindy Casparis Director of Purchasing	Dann Matlock Business/Marketing Faculty	Tom Landers Building Technologies Faculty	LANDSCAPE Coleman & Associates Marissa McKinney Landscape Architect
Kathy Hansen District 4 Trustee	Jay Wesson Director of Facilities and Construction	Melvin Callender Business/Marketing Faculty	Timothy Sisak Building Technologies Faculty	
Margie Villalpando District 2 Trustee	Mike Doyle CTE Director	Theodore Miller Business/Marketing Faculty	Tamara Tupper Fashion Faculty	
	Doug Wozniak Associate Director of Transportation	William Hunter Business/Marketing Faculty	Ryan Randolph Science Faculty, Academic Dean	
		Karen Mills Business/Marketing Faculty	Adam Wagner Social Studies Faculty, Academic Dean	
		Meghan Bading Health Sciences Faculty	Glenda fish Denison Science Faculty, Instructional Coach	
		Jack Davis Health Sciences Faculty	Jennifer Smith Mathematics Faculty, Academic Dean	
		Rani Reyes Health Sciences Faculty	Adam Wagner Social Studies Faculty, Academic Dean	
		Garvin Smith Health Sciences Faculty	Carolyn Coburn English Faculty, Academic Dean	
		Joy Hargraves Health Sciences Faculty	Chris Suplee ELA Instructional Coach	

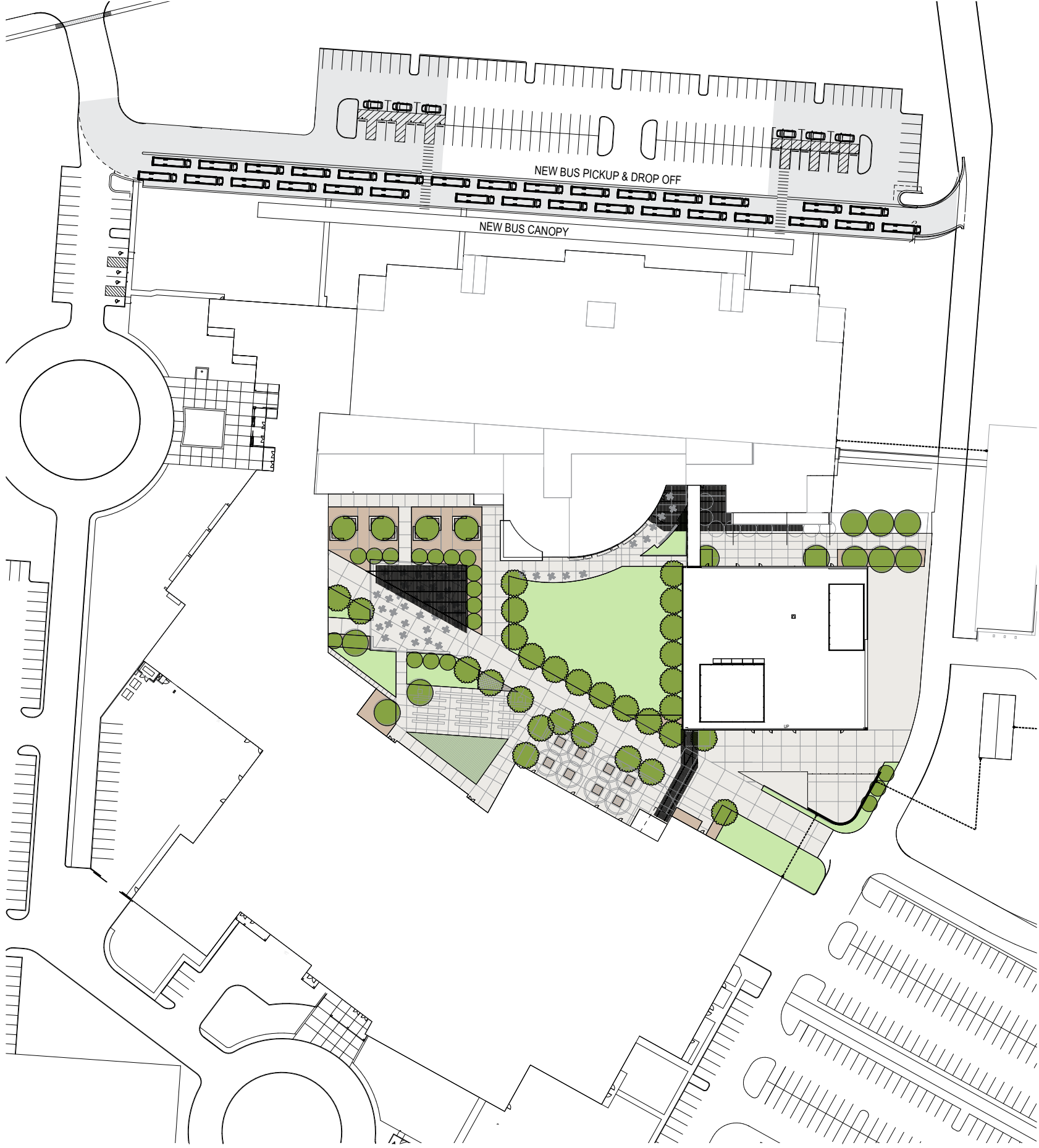


San Marcos Consolidated Independent School District
San Marcos High School Addition & Renovation
 10/23/2017 (UPDATED March 19, 2018)



DESIGN DEVELOPMENT /

Overall Site Plan

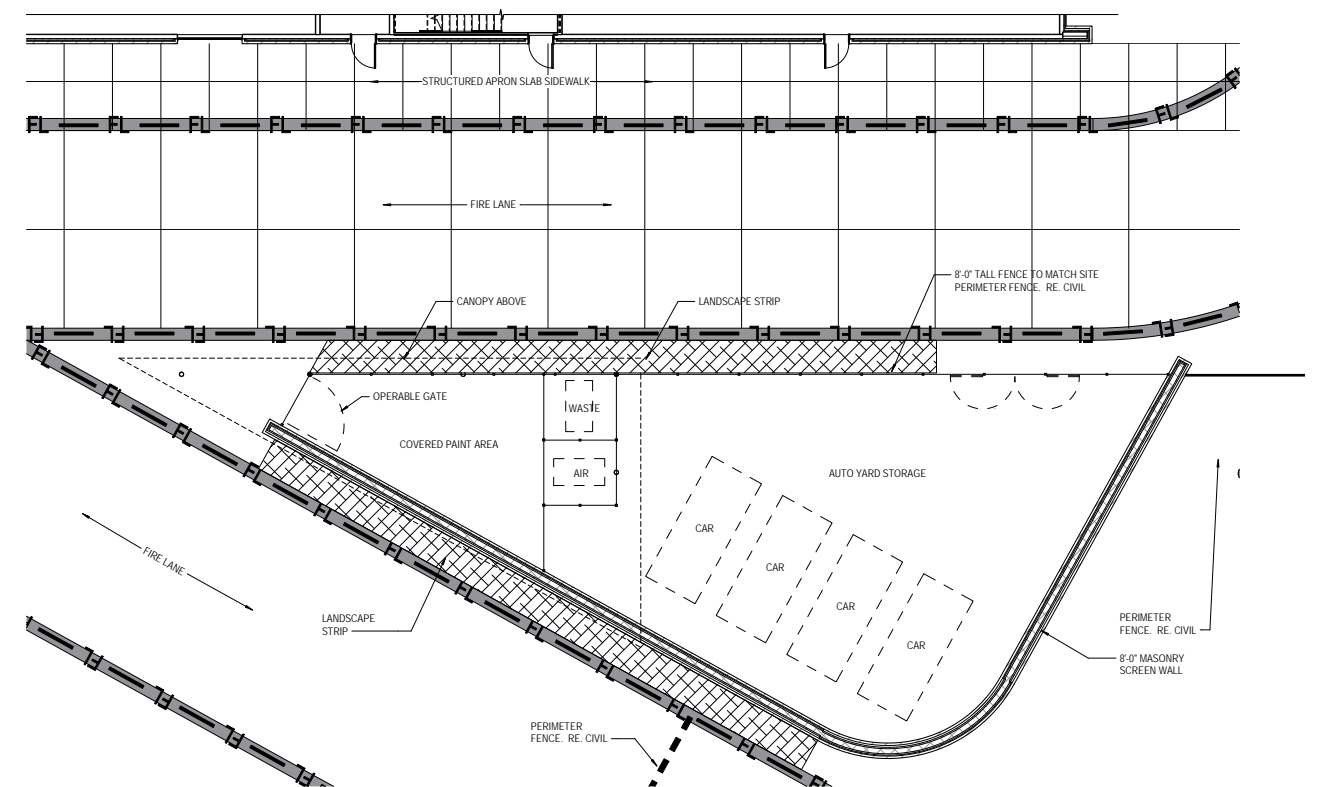




ENLARGED COURTYARD PLAN



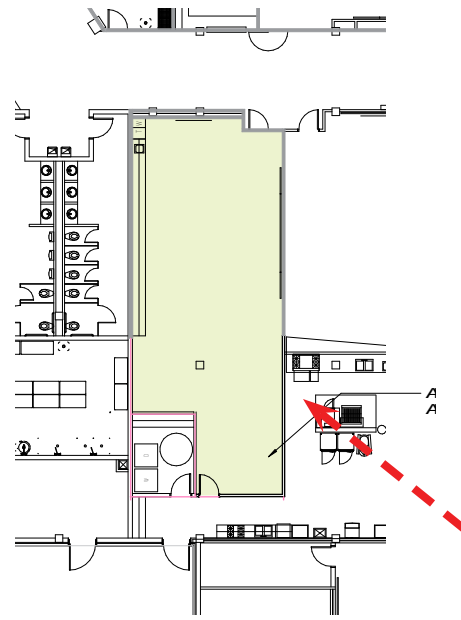
EXTERIOR STORAGE PERSPECTIVE



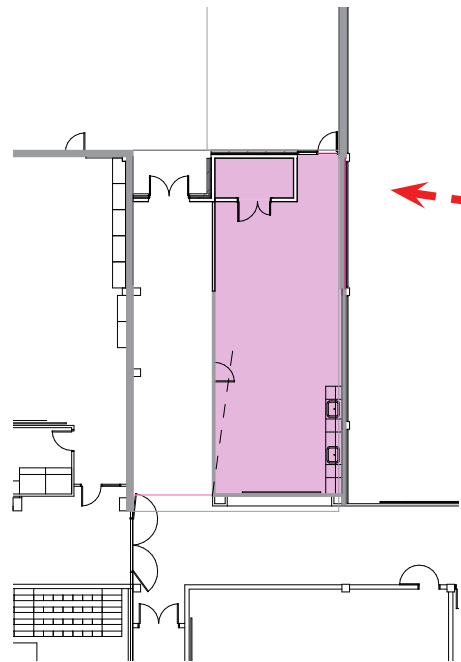
EXTERIOR STORAGE PLAN

DESIGN DEVELOPMENT /

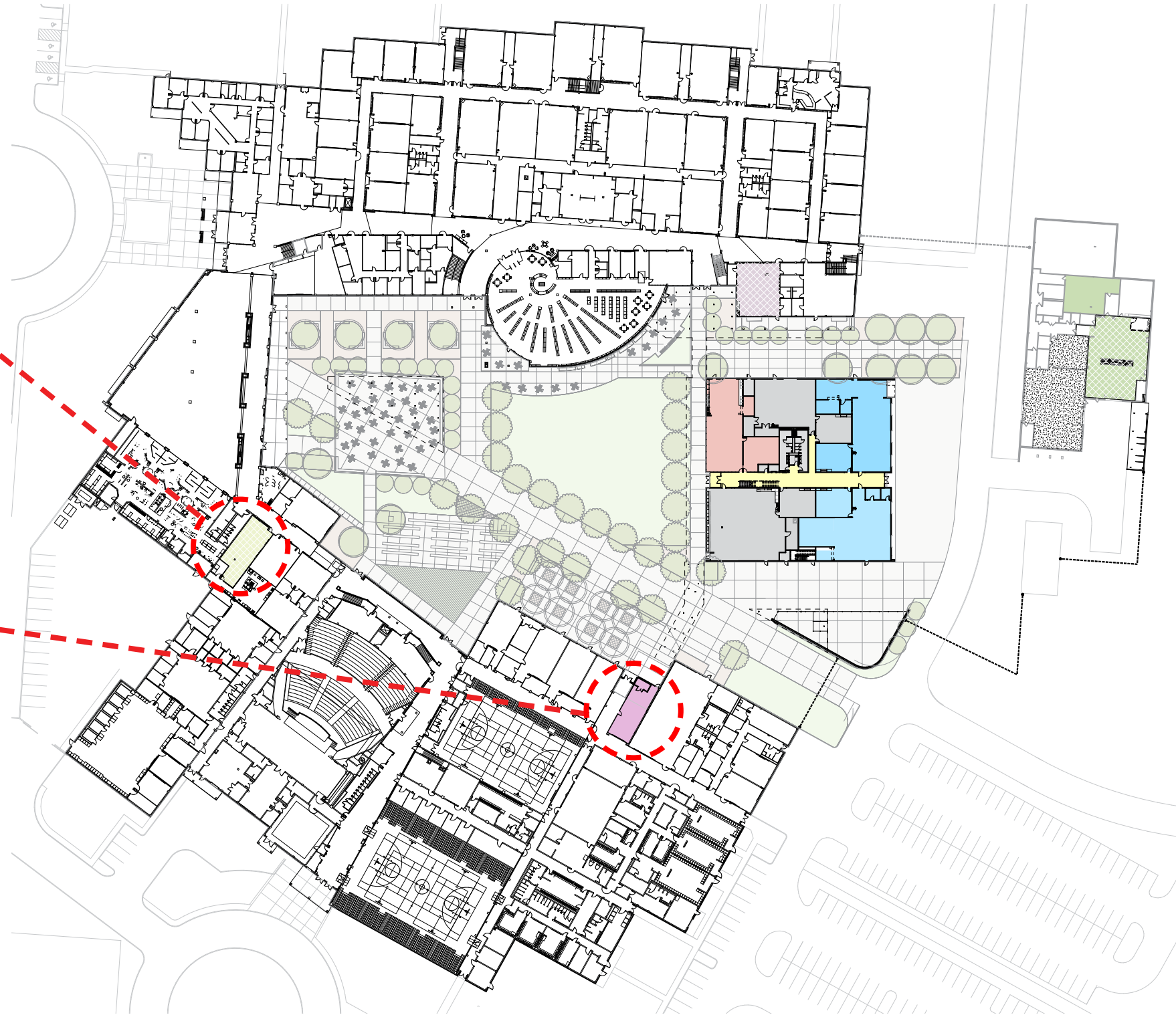
Overall Floor Plan - Lower Level



LOGISTICS
(ALTERNATIVE)



CERAMICS
(BASE BID)



FLOOR PLAN PROGRAM LEGEND	
	Automotive Collision
	Automotive Repair
	AV Broadcasting
	Building Technologies
	Business (furniture updates)
	Existing Building Area (no work)
	Ceramics Addition
	Circulation
	Fashion
	General Education (regained)
	Health/Bio Sciences
	Law Enforcement
	Logistics/Distribution
	Media Center
	Robotics
	Support
	Vet Med/Animal Industries
	Remodel
	Alternate Remodel (not base bid)
	Existing C.T.E program (no change)



DESIGN DEVELOPMENT /

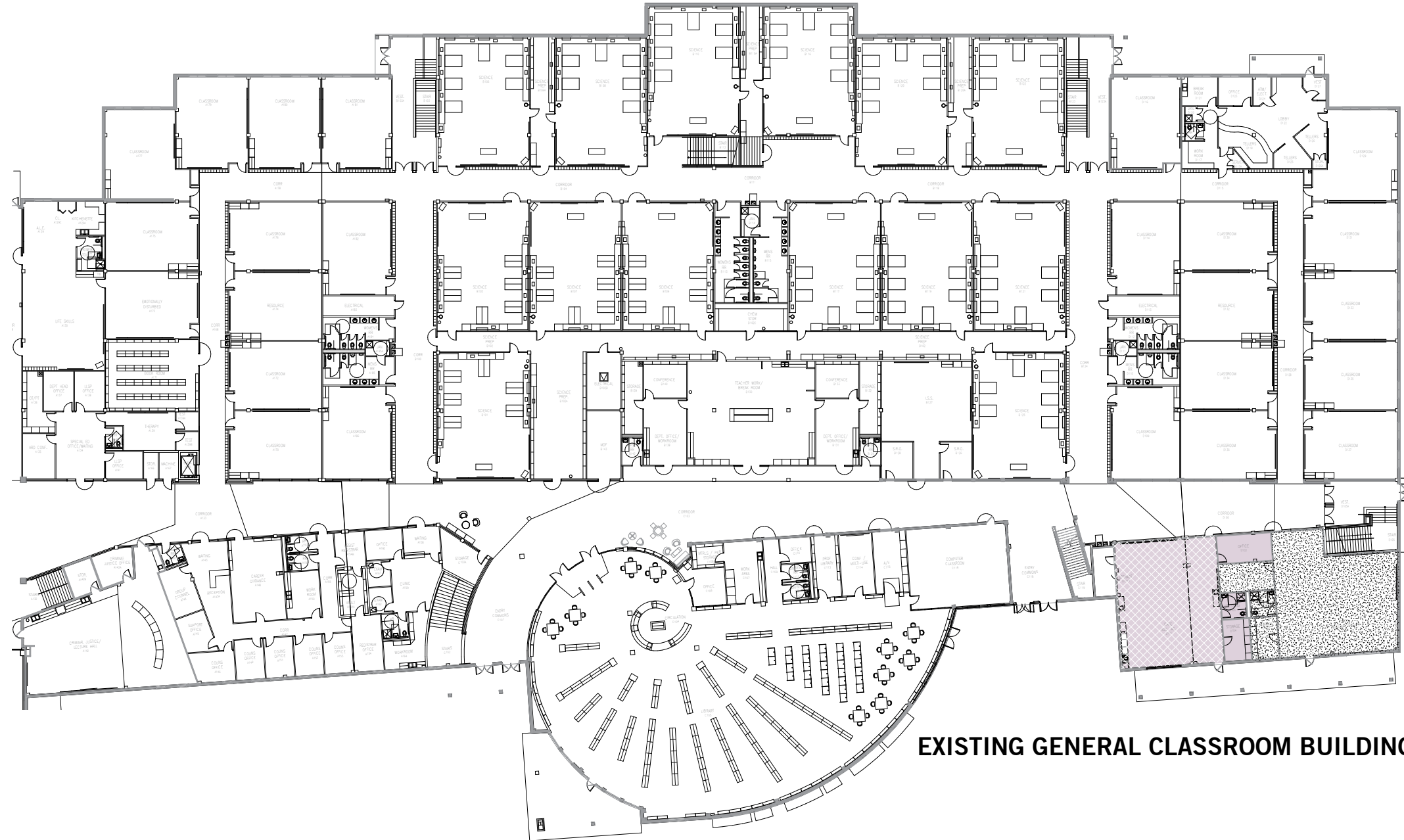
Overall Floor Plan - Upper Level



FLOOR PLAN PROGRAM LEGEND	
	Automotive Collision
	Automotive Repair
	AV Broadcasting
	Building Technologies
	Business (furniture updates)
	Existing Building Area (no work)
	Ceramics Addition
	Circulation
	Fashion
	General Education (regained)
	Health/Bio Sciences
	Law Enforcement
	Logistics/Distribution
	Media Center
	Robotics
	Support
	Vet Med/Animal Industries
	Remodel
	Alternate Remodel (not base bid)
	Existing C.T.E program (no change)

DESIGN DEVELOPMENT /

Renovation - Lower Level



EXISTING GENERAL CLASSROOM BUILDING

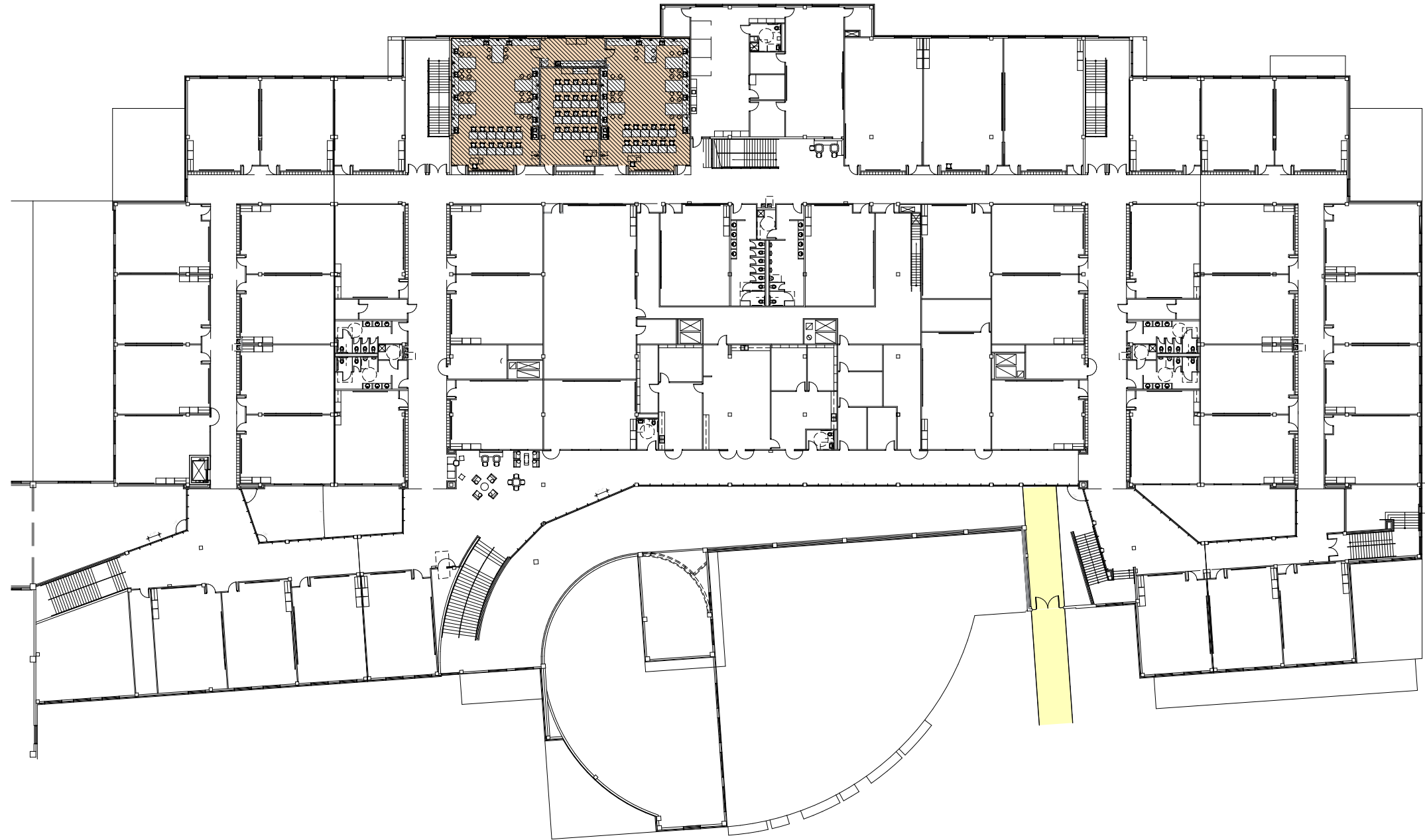
FLOOR PLAN PROGRAM LEGEND

- Automotive Collision
- Automotive Repair
- AV Broadcasting
- Building Technologies
- Business (furniture updates)
- Existing Building Area (no work)
- Ceramics Addition
- Circulation
- Fashion
- General Education (regained)
- Health/Bio Sciences
- Law Enforcement
- Logistics/Distribution
- Media Center
- Robotics
- Support
- Vet Med/Animal Industries
- Remodel
- Alternate Remodel (not base bid)
- Existing C.T.E program (no change)



DESIGN DEVELOPMENT /

Renovation - Upper Level



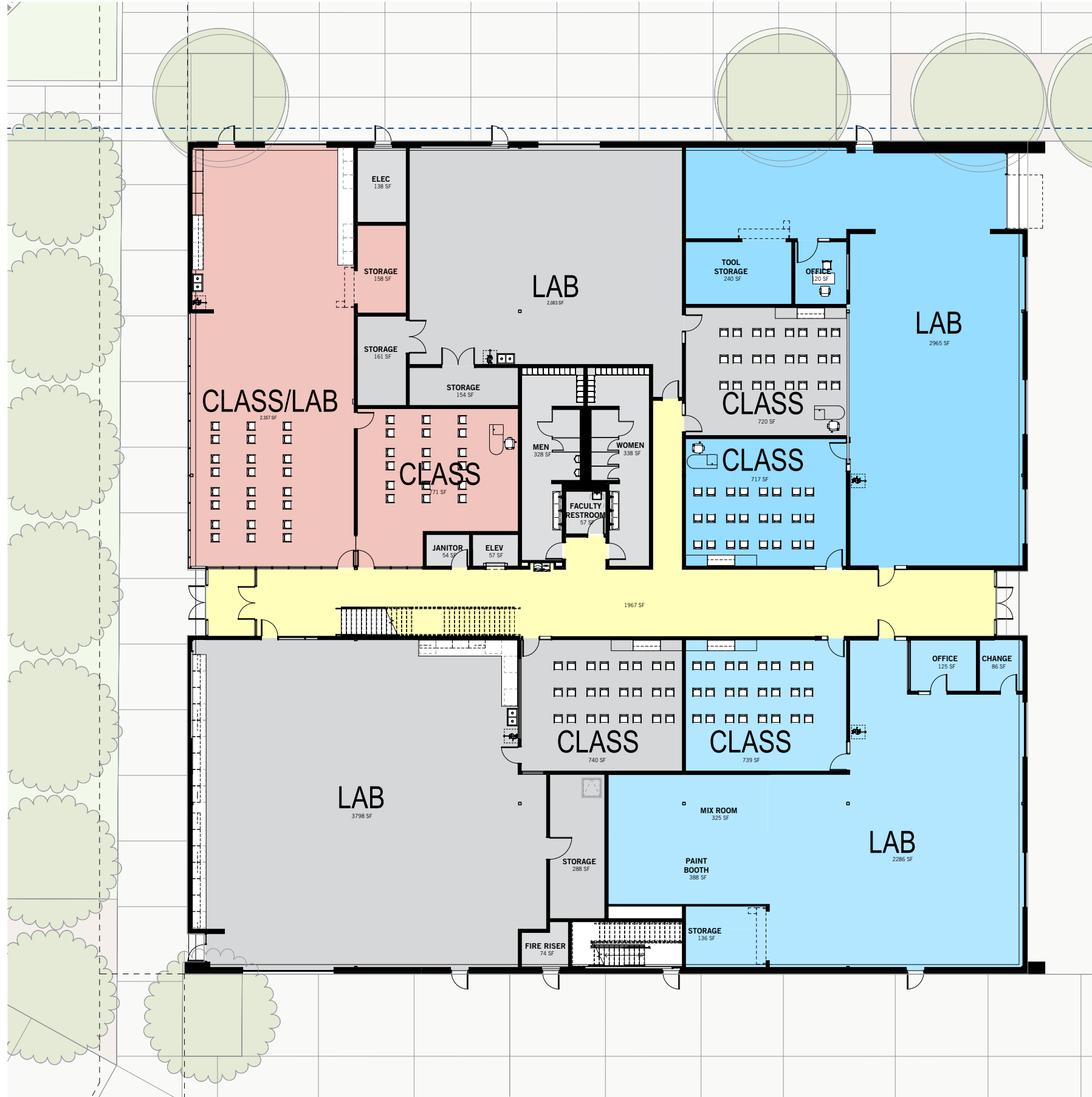
FLOOR PLAN PROGRAM LEGEND

- Automotive Collision
- Automotive Repair
- AV Broadcasting
- Building Technologies
- Business (furniture updates)
- Existing Building Area (no work)
- Ceramics Addition
- Circulation
- Fashion
- General Education (regained)
- Health/Bio Sciences
- Law Enforcement
- Logistics/Distribution
- Media Center
- Robotics
- Support
- Vet Med/Animal Industries
- Remodel
- Alternate Remodel (not base bid)
- Existing C.T.E program (no change)

EXISTING GENERAL CLASSROOM BUILDING

DESIGN DEVELOPMENT /

Addition Floor Plan - Lower Level



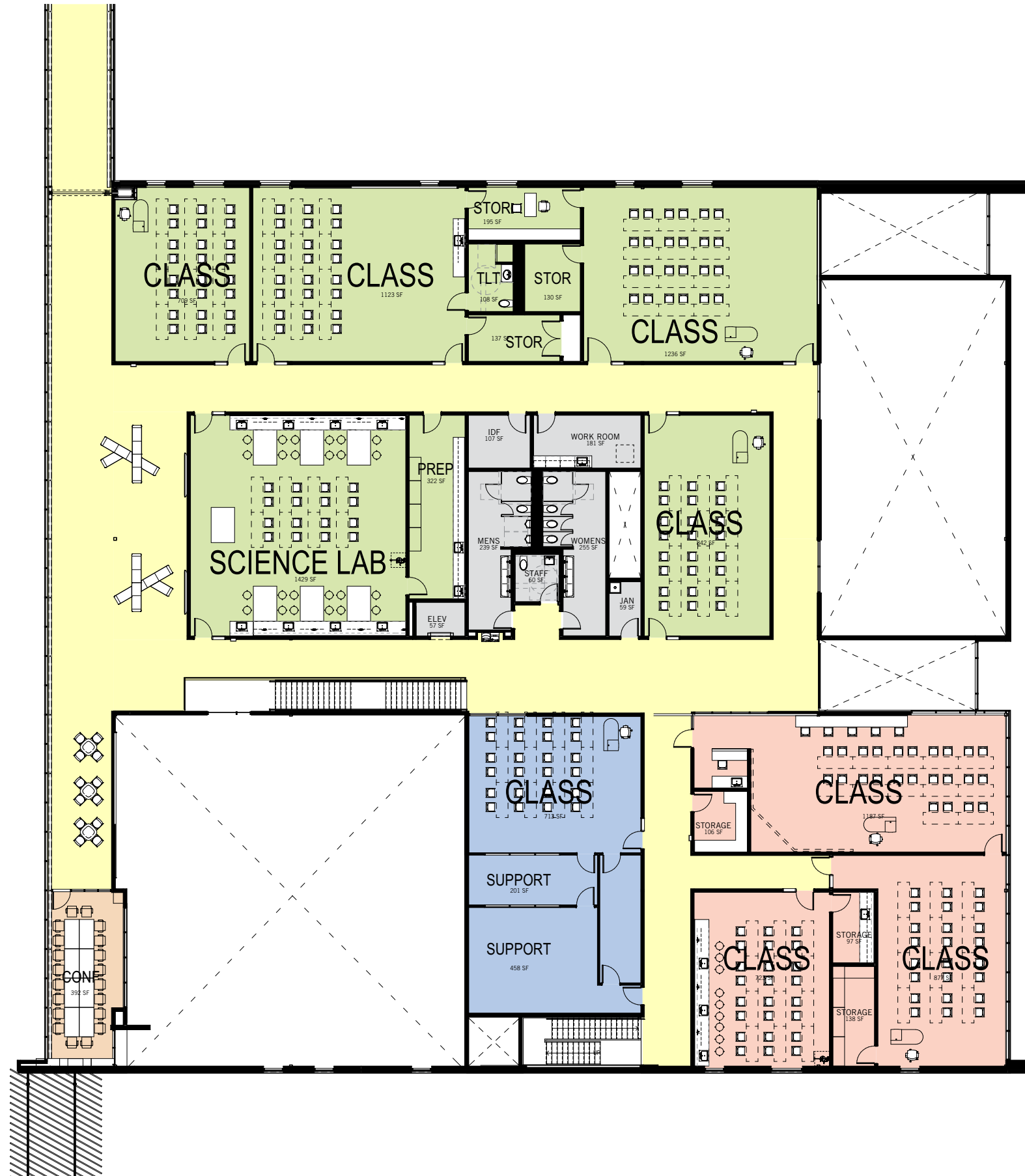
FLOOR PLAN PROGRAM LEGEND

- Automotive Collision
- Automotive Repair
- AV Broadcasting
- Building Technologies
- Business (furniture updates)
- Existing Building Area (no work)
- Ceramics Addition
- Circulation
- Fashion
- General Education (regained)
- Health/Bio Sciences
- Law Enforcement
- Logistics/Distribution
- Media Center
- Robotics
- Support
- Vet Med/Animal Industries
- Remodel
- Alternate Remodel (not base bid)
- Existing C.T.E program (no change)



DESIGN DEVELOPMENT /

Addition Floor Plan - Upper Level



FLOOR PLAN PROGRAM LEGEND	
	Automotive Collision
	Automotive Repair
	AV Broadcasting
	Building Technologies
	Business (furniture updates)
	Existing Building Area (no work)
	Ceramics Addition
	Circulation
	Fashion
	General Education (regained)
	Health/Bio Sciences
	Law Enforcement
	Logistics/Distribution
	Media Center
	Robotics
	Support
	Vet Med/Animal Industries
	Remodel
	Alternate Remodel (not base bid)
	Existing C.T.E program (no change)

DESIGN DEVELOPMENT /

Interior Perspective



DESIGN DEVELOPMENT /

Courtyard Perspective



DESIGN DEVELOPMENT /

Exterior Perspectives







EXTERIOR MATERIALS

SIoux CITY BRICK



(MATCH EXISTING)

MONOTONE PANEL



ACCENT PANEL



METAL PANEL



GLAZING



(MATCHES EXISTING)

TRELLIS



DESIGN DEVELOPMENT /

Elevations



NORTH ELEVATION

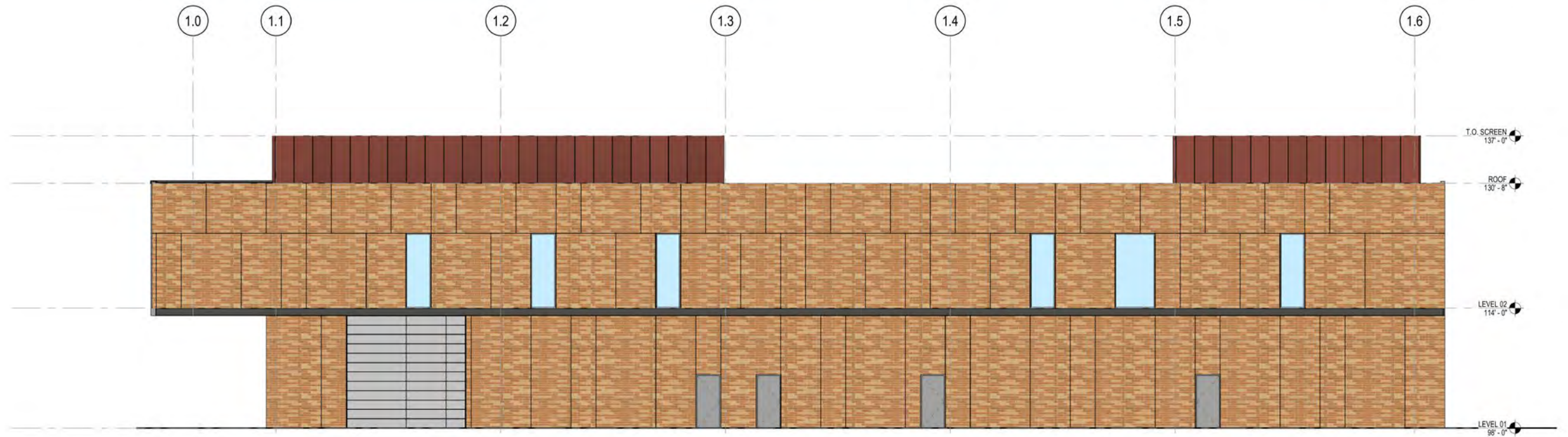


EAST ELEVATION

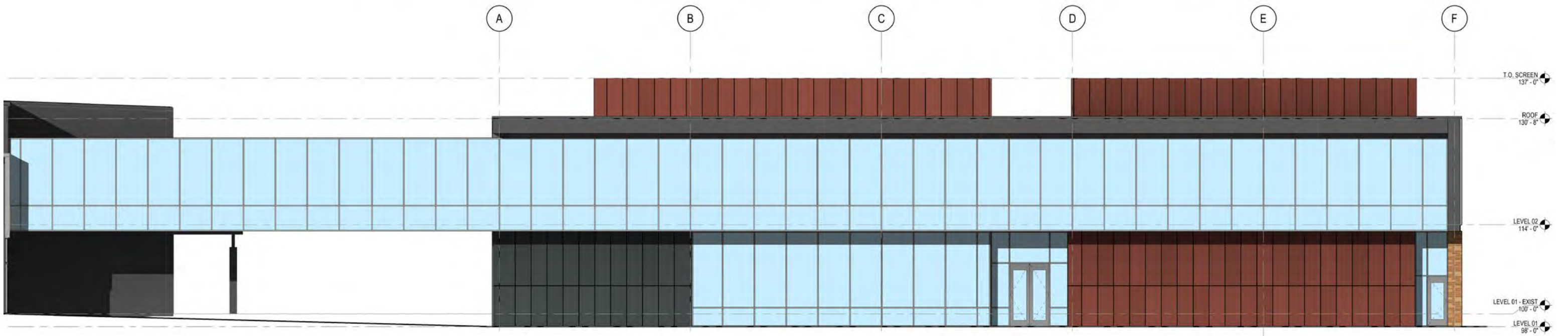


DESIGN DEVELOPMENT /

Elevations



SOUTH ELEVATION

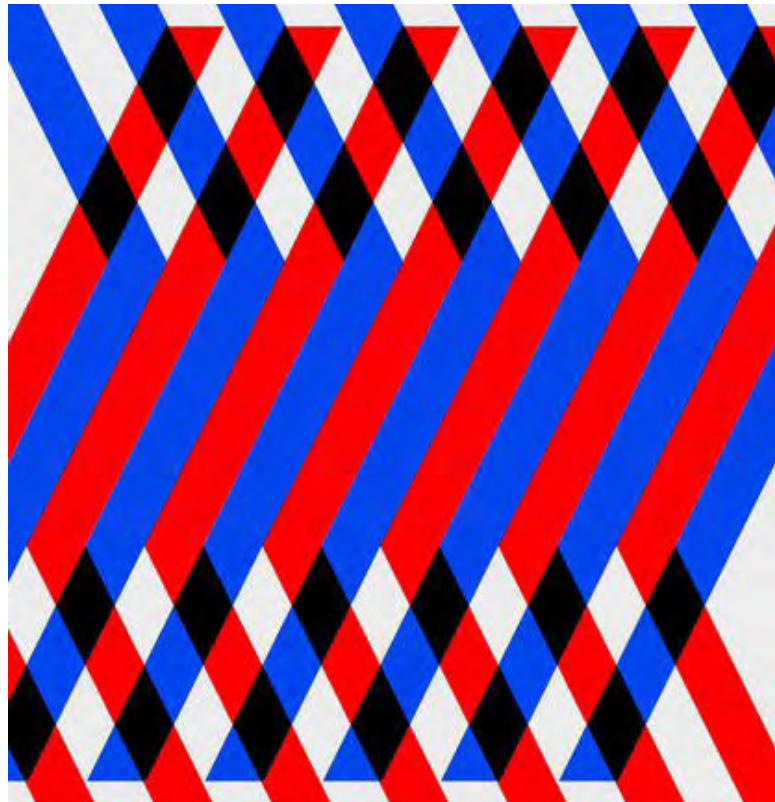
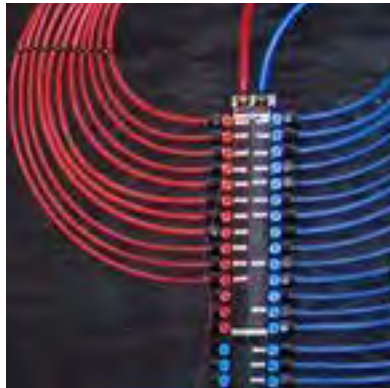
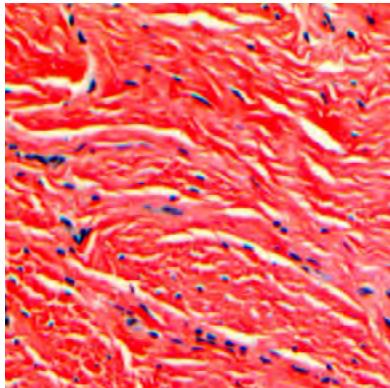
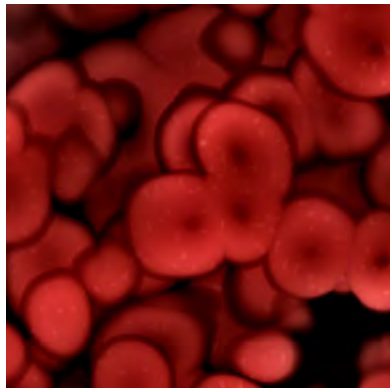
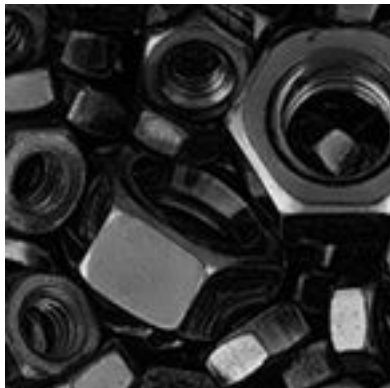


WEST ELEVATION

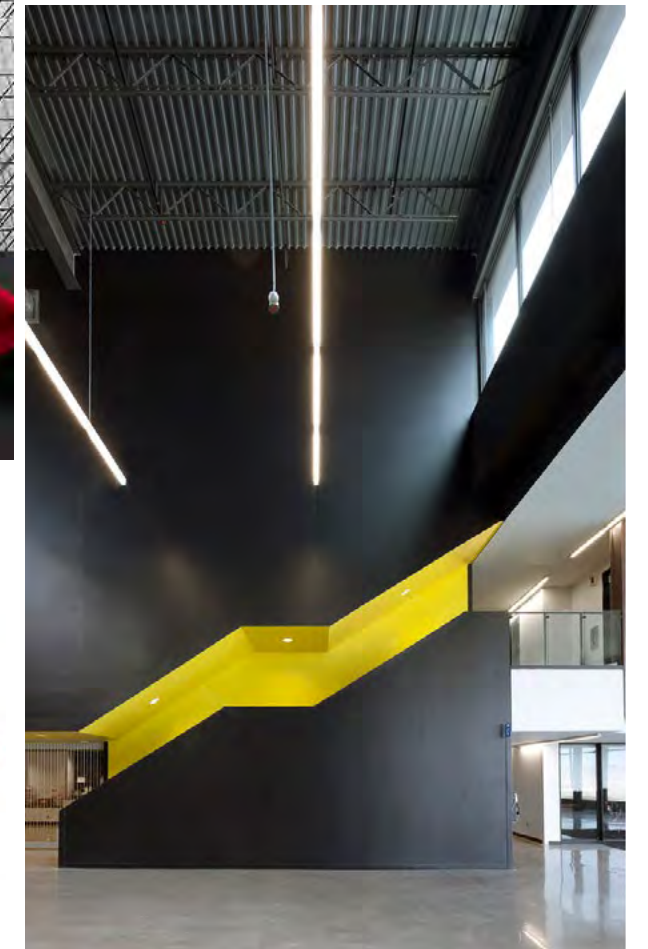
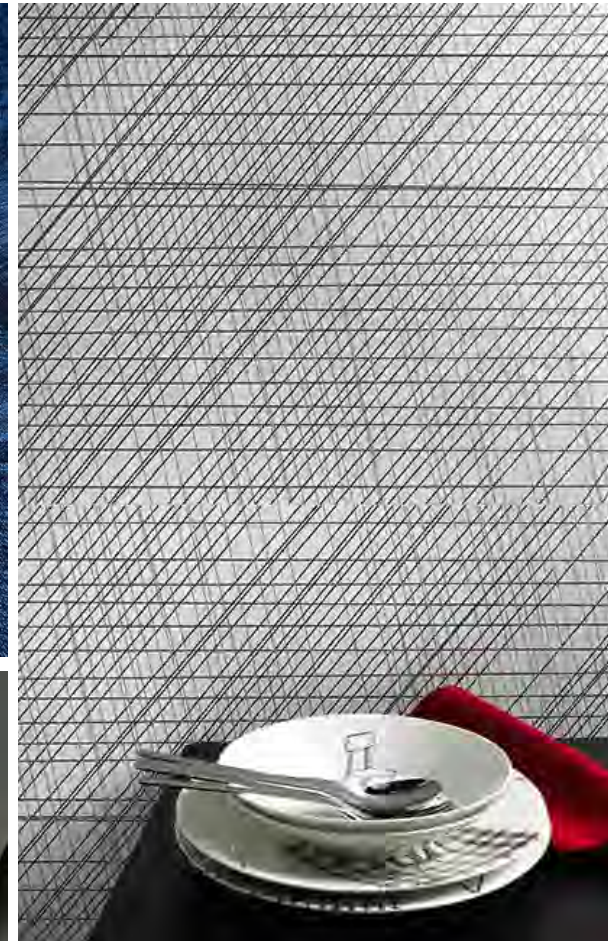
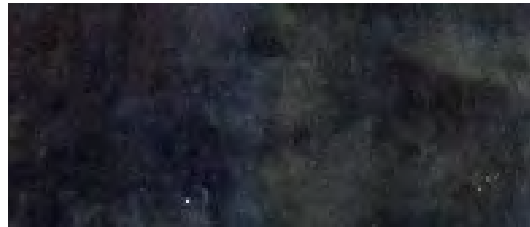


INTERIORS
DESIGN DEVELOPMENT UPDATE

DESIGN CONCEPT | INTERSECTIONS



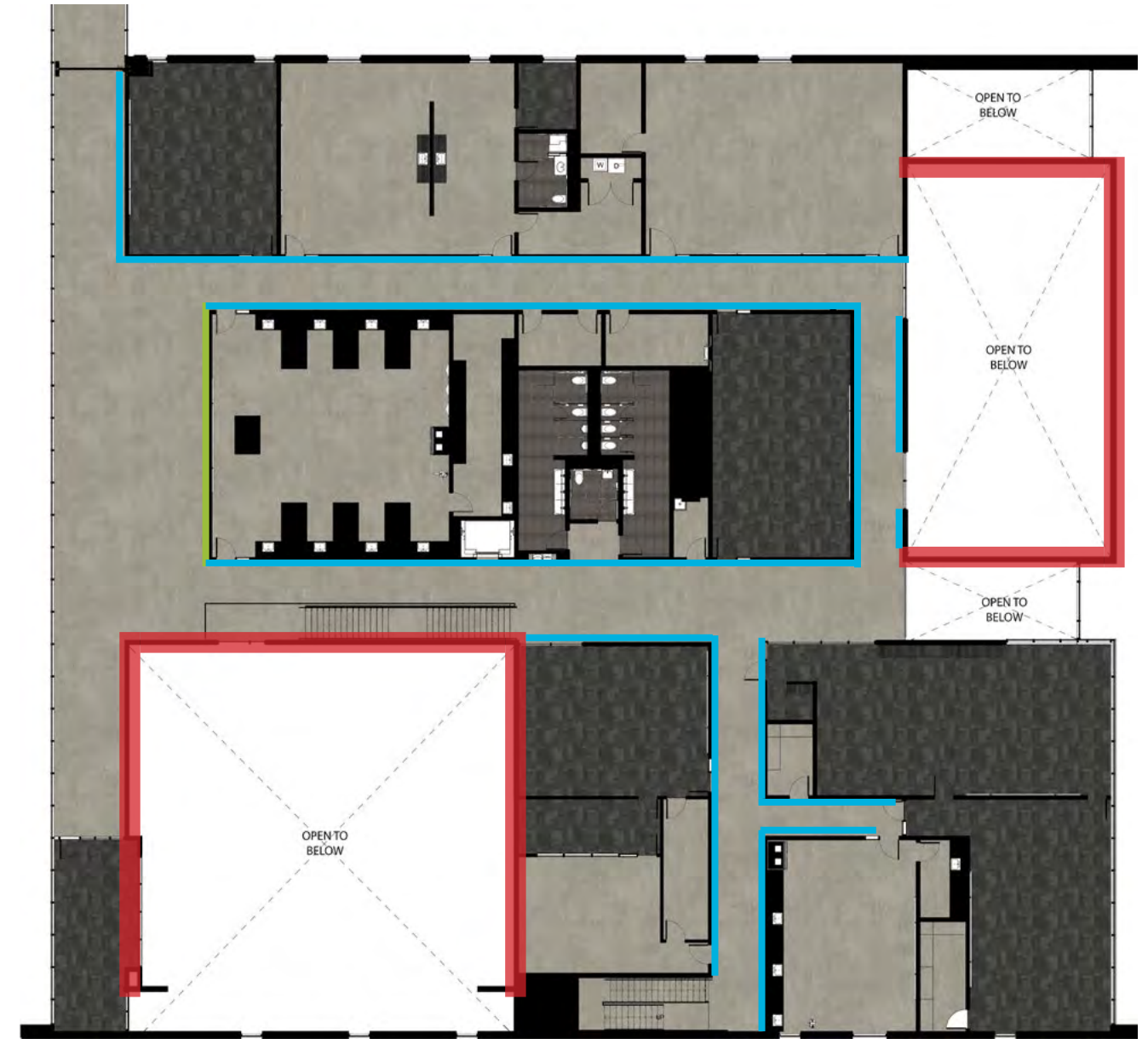
FINISH INSPIRATION | INTERSECTIONS






FINISH PLAN



LEVEL 01 | NTS

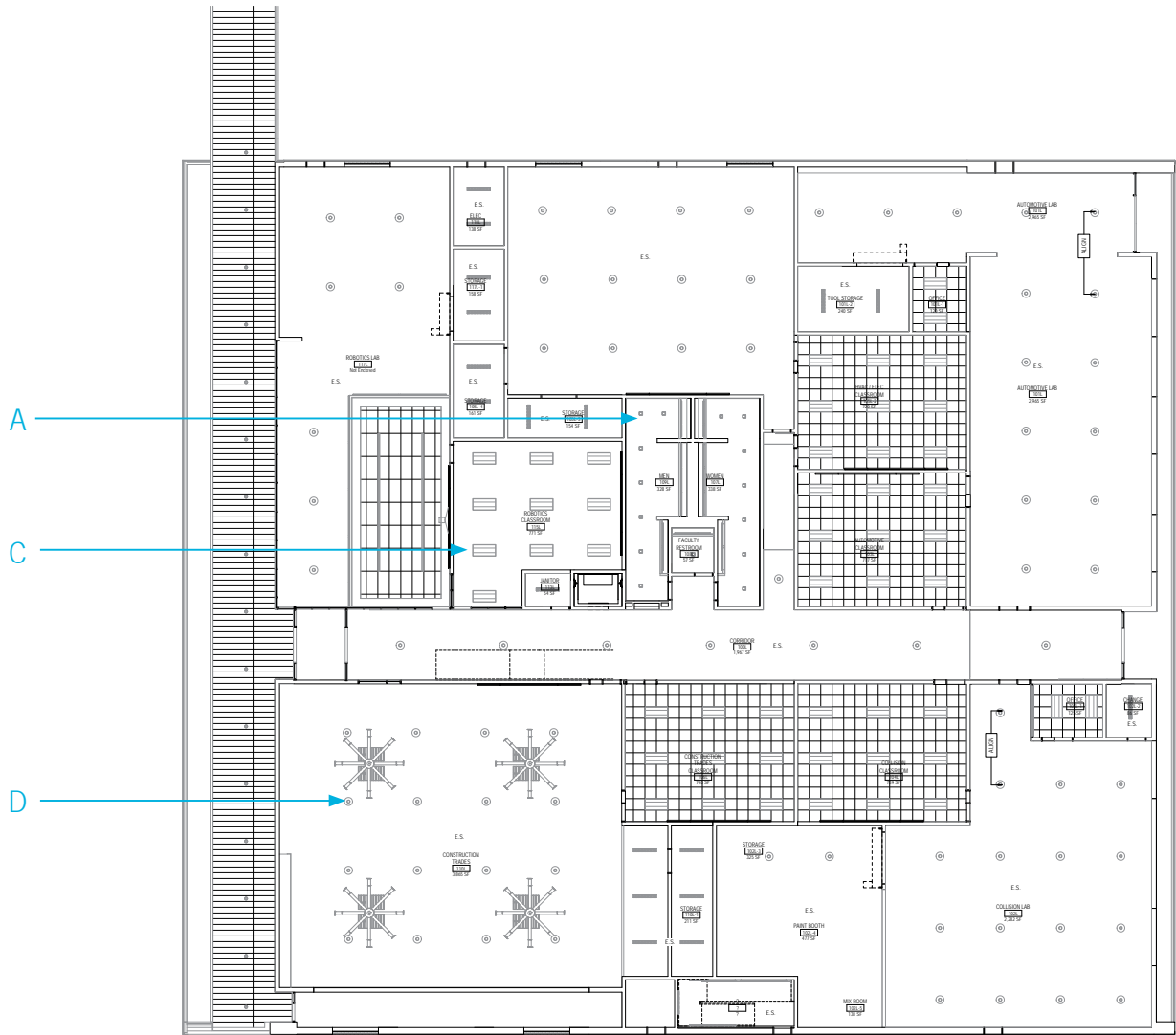


LEVEL 02 | NTS

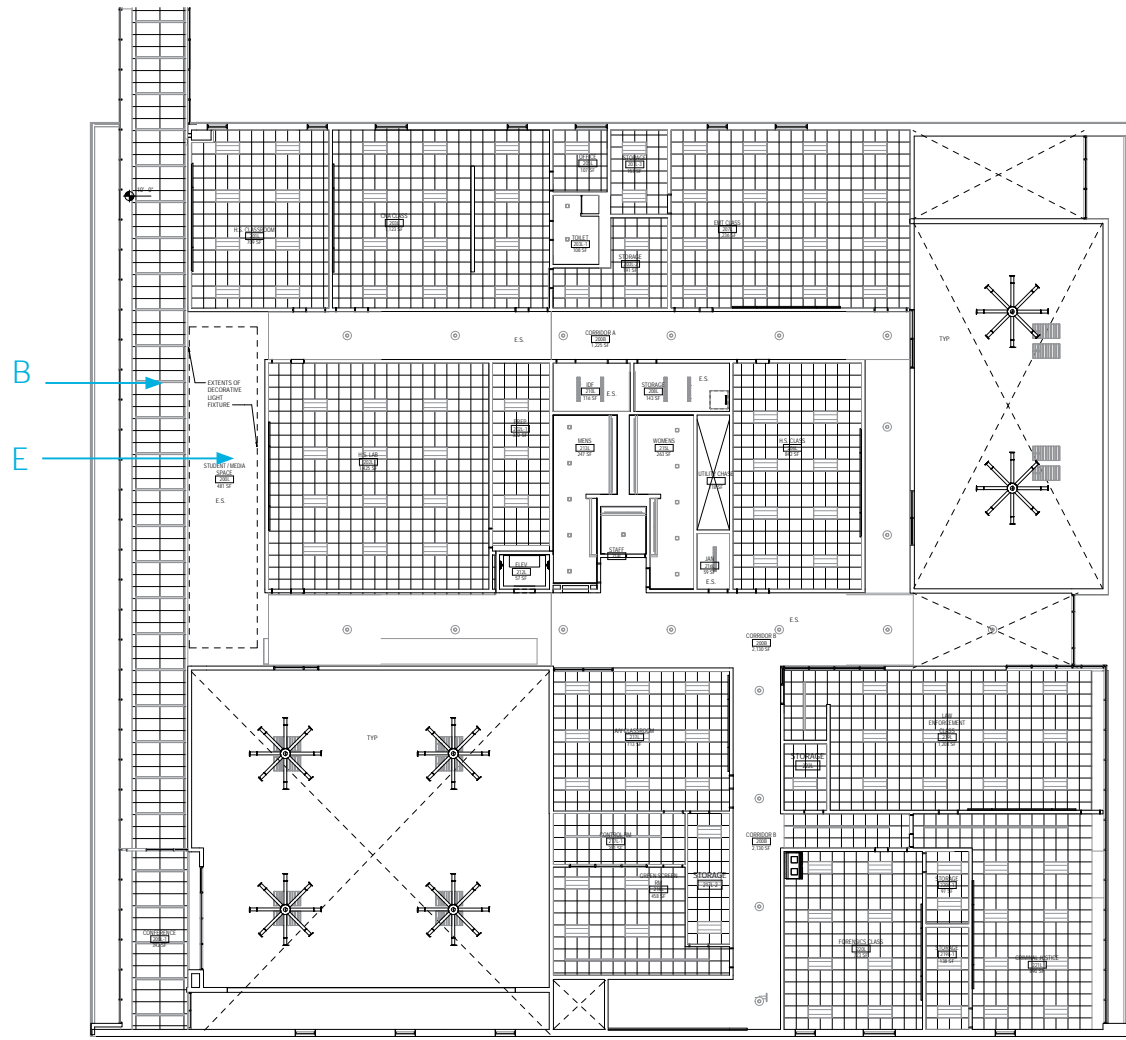
- KEY:**
-  WALLS THAT ALIGN FROM LEVEL 1 TO 2 WITH COLORED PANELS
 -  TILE CORRIDOR WAINSCOT
 -  WALL GRAPHIC



REFLECTED CEILING PLAN



LEVEL 01 | 1/32 SCALE



LEVEL 02 | 1/32 SCALE



A (Sq. Can) | F (Cove)



B



C



D



E



DESIGN STRATEGY | INTERSECTIONS



VIEW INTO STUDENT MEDIA SPACE